

Buatan I Mill

Sustainability and Traceability Report
Reporting period January-December 2018

Company: PT Inti Indosawit Subur ([Asian Agri](#))
Location: Pelalawan Regency, Riau Province, INDONESIA
Coordinates: 0.43444 101.82500

Certified palm oil supply

A. ISCC Certification*

Certification: [ISCC EU](#)

B. RSPO Certification

Certification Type: Mass Balance

Audit Report: [December 2017](#)

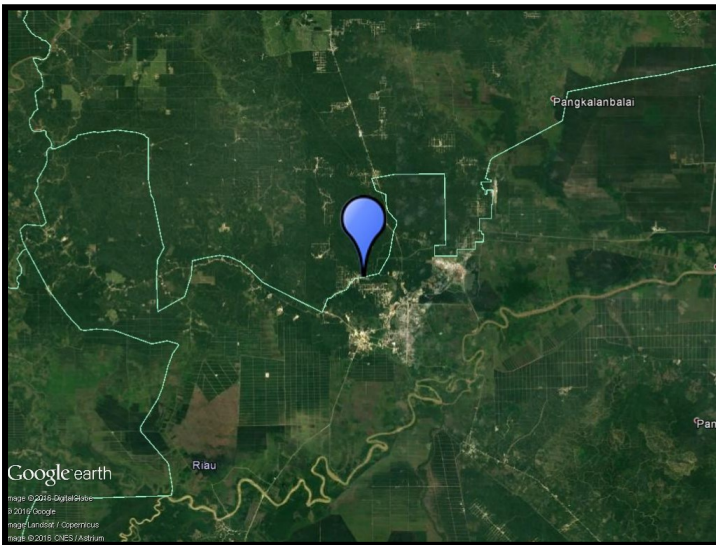
Mill Production

See recent [audit report](#).

Certified Estate	Location	Certificate
Buatan	0.51028 101.81833	RSPO, ISCC
Bhakti Mandiri Co/op	0.48777 101.79644	RSPO, ISCC
Jaya Makmur Co/op	0.44911 101.79206	RSPO, ISCC
Sumber Rejeki Co/op	0.43063 101.81378	RSPO, ISCC
Sejahtera Co/op	0.42469 101.83541	RSPO, ISCC

* This mill may be supplied by estates via Mass Balance. This list contains estates supplying to Neste; for a complete list please visit the supplier's [dashboard](#).

Satellite image of the area surrounding the mill



View this mill in [Google Maps](#).

Sustainability is part of everything we do. All crude palm oil we have used has been fully traceable to the plantation level since 2007, and 100% certified since 2013. We do not own any oil palm plantations, nor operate any palm oil refineries. Instead, we source crude palm oil from carefully selected suppliers in Malaysia and Indonesia that are committed to certification and sustainability. www.neste.com/sustainability

NESTE