

# Buatan II Mill

Sustainability and Traceability Report  
Reporting period January-December 2018

Company: PT Inti Indosawit Subur ([Asian Agri](#))  
Location: Pelalawan Regency, Riau Province, INDONESIA  
Coordinates: 0.45667 101.86900

## Certified palm oil supply

### A. ISCC Certification\*

Certification: [ISCC EU](#)

### B. RSPO Certification

Certification Type: Mass Balance

Audit Report: [December 2017](#)

### Mill Production

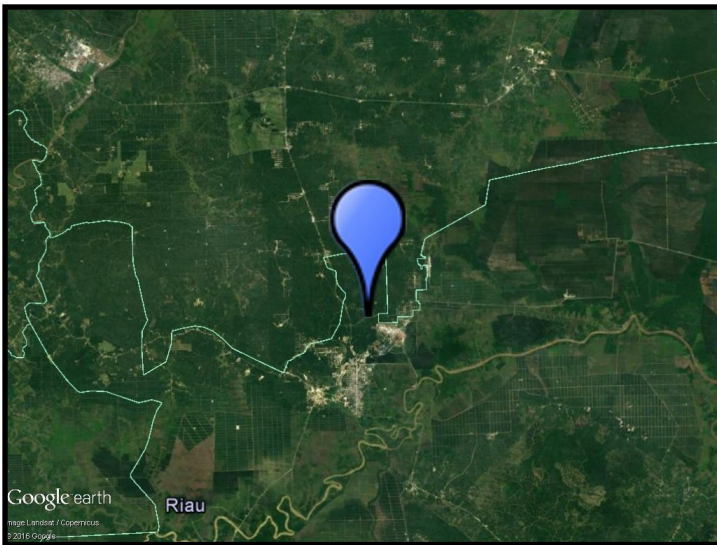
See recent [audit report](#).

Certified Estate	Location	Certificate
Buatan	0.51028 101.81833	RSPO, ISCC
KUD Mulus Rhayu	0.510444 101.82428	RSPO, ISCC
KUD Bhirawa Bhakti	0.52225 101.79019	RSPO, ISCC
KUD Tani Rukun	0.450889 101.90089	RSPO, ISCC
KUD Kebun Sawit Harapan	0.486361 101.91019	RSPO, ISCC

Plus five additional estates; see RSPO report. KKPA ISCC Certificate.

\* This mill may be supplied by estates via Mass Balance. This list contains estates supplying to Neste; for a complete list please visit the supplier's [dashboard](#).

## Satellite image of the area surrounding the mill



View this mill in [Google Maps](#).

**Sustainability is part of everything we do.** All crude palm oil we have used has been fully traceable to the plantation level since 2007, and 100% certified since 2013. We do not own any oil palm plantations, nor operate any palm oil refineries. Instead, we source crude palm oil from carefully selected suppliers in Malaysia and Indonesia that are committed to certification and sustainability. [www.neste.com/sustainability](http://www.neste.com/sustainability)

**NESTE**