

Padang Halaban Mill

Sustainability and Traceability Report
Reporting period January-December 2018

Company: PT SMART ([Golden Agri](#))
Location: Labuhan Batu Regency, North Sumatra Province, INDONESIA
Coordinates: 2.31750 99.83889

Certified palm oil supply

A. ISCC Certification*

Certification: [ISCC EU](#)

B. RSPO Certification

Cert. Type: Identity Preserved

Audit Report: [August 2018](#)

Mill Production

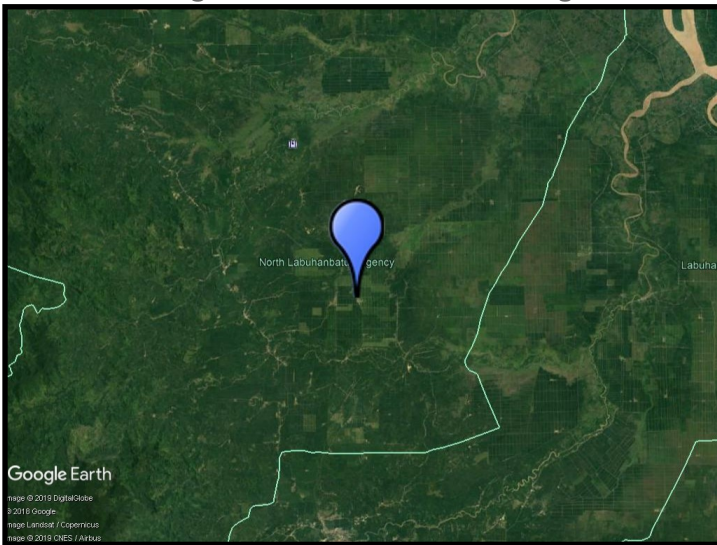
Capacity: 60 tons/hour

Certified Volume: 76,220 (MT)

Certified Estate	Location		Certificate
Padang Halaban	2.31278	99.83944	RSPO, ISCC
Pernantian	2.23639	99.78083	RSPO, ISCC
Adipati	2.30444	99.91072	RSPO, ISCC
Kanopan Ulu	2.48333	99.78333	RSPO, ISCC

* This mill may be supplied by estates via Mass Balance. This list contains estates supplying to Neste; for a complete list please visit the supplier's [dashboard](#).

Satellite image of the area surrounding the mill



View this mill in [Google Maps](#).

Sustainability is part of everything we do. All crude palm oil we have used has been fully traceable to the plantation level since 2007, and 100% certified since 2013. We do not own any oil palm plantations, nor operate any palm oil refineries. Instead, we source crude palm oil from carefully selected suppliers in Malaysia and Indonesia that are committed to certification and sustainability. www.neste.com/sustainability

NESTE