

Semilar Mill

Sustainability and Traceability Report
Reporting period January-December 2018

Company: PT Tapian Nadenggan ([Golden Agri](#))
Location: Seruyan Regency, Central Kalimantan Province, INDONESIA
Coordinates: -2.24826 112.34043

Certified palm oil supply

A. ISCC Certification*

Certification: [ISCC EU](#)

B. RSPO Certification

Certification Type: Mass Balance

Audit Report: [August 2018](#)

Mill Production

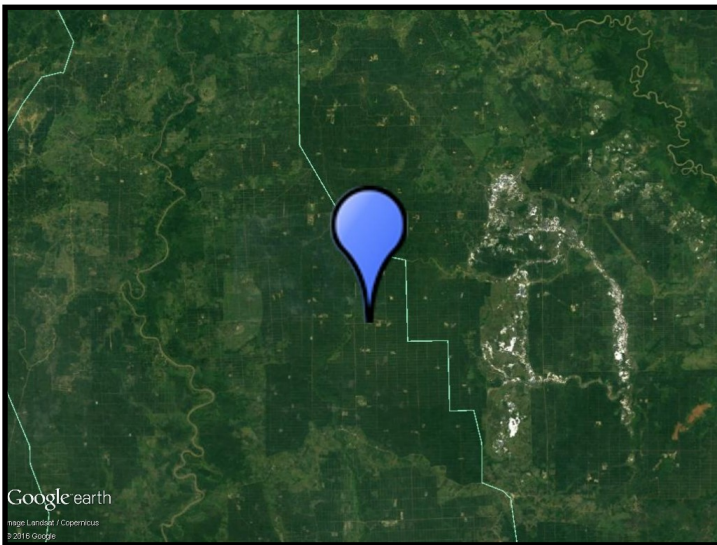
Capacity: 80 tons/hour

Certified Volume: 37,941 (MT)

Certified Estate	Location	Certificate
Semilar	-2.25167 112.34944	RSPO, ISCC
Sei Rindu	-2.25333 112.40778	RSPO, ISCC
Mandang	-2.27444 112.33778	RSPO, ISCC
Puri	-2.30611 112.42028	RSPO, ISCC

* This mill may be supplied by estates via Mass Balance. This list contains estates supplying to Neste; for a complete list please visit the supplier's [dashboard](#).

Satellite image of the area surrounding the mill



View this mill in [Google Maps](#).

Sustainability is part of everything we do. All crude palm oil we have used has been fully traceable to the plantation level since 2007, and 100% certified since 2013. We do not own any oil palm plantations, nor operate any palm oil refineries. Instead, we source crude palm oil from carefully selected suppliers in Malaysia and Indonesia that are committed to certification and sustainability. www.neste.com/sustainability

NESTE