

# Pangkalan Panji Mill

Sustainability and traceability report  
Reporting period January - June, 2022

Company: PT Sawit Mas Sejahtera ([Golden Agri](#))  
Location: Banyuasin Regency, South Sumatera Province, INDONESIA  
Coordinates: -2.94920, 104.46600

## Certified palm oil supply

### A. ISCC certification\*

Certification: [ISCC EU](#)

Certified estate	Location		Certificate
Sawit Mas	-2.948531	104.46428	RSPO, ISCC

### B. RSPO certification

Certification type: Mass Balance

Audit report: [September, 2019](#)

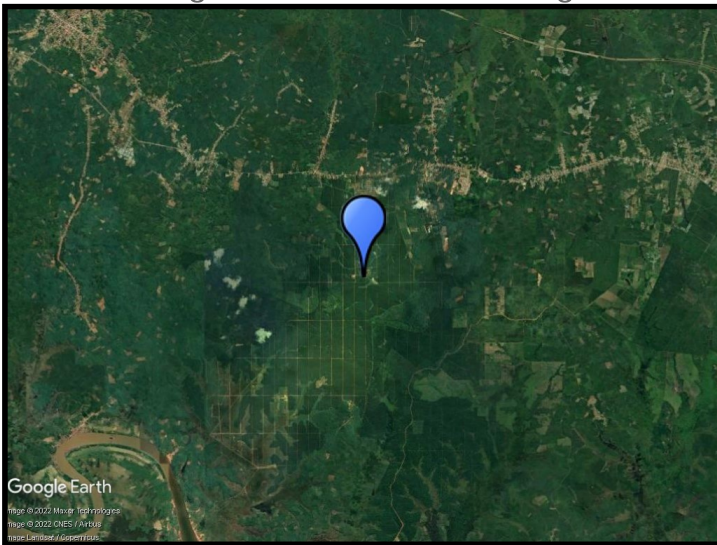
### Mill production

Capacity: 30 tons/hour

Certified volume: 4,536 (MT)

\* This mill may be supplied by estates via Mass Balance. This list contains estates supplying to Neste; for a complete list please visit the supplier's [dashboard](#).

## Satellite image of the area surrounding the mill



View this mill in [Google Maps](#).

## Sustainability - deeply embedded in Neste's everyday business.

All palm oil we have used has been fully traceable to the plantation level since 2007 and 100% certified since 2013. We do not own any oil palm plantations or operate any palm oil refineries. Instead, we source palm oil from carefully selected suppliers in Malaysia and Indonesia that are committed to certification and sustainability.

[www.neste.com/sustainability](http://www.neste.com/sustainability)

**NESTE**