

# POM 4 Mill

Sustainability and traceability report  
Reporting period January - June, 2022

Company: PT Dharma Satya Nustantara ([DSN](#))  
Location: Kutai Timur Regency, Kalimantan Timur Province, INDONESIA  
Coordinates: 1.15140, 116.74640

## Certified palm oil supply

### A. ISCC certification\*

Certification: [ISCC EU](#)

### B. RSPO certification

Certification type: Mass Balance

Audit report: [September, 2022](#)

### Mill production

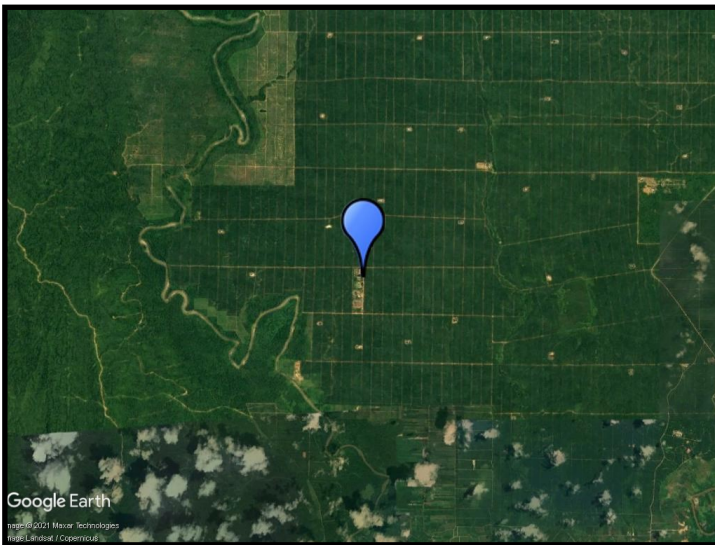
Capacity: 60 tons/hour

Certified volume: 93,131 (MT)

| Certified estate | Location |           | Certificate |
|------------------|----------|-----------|-------------|
| Jabdan 1         | 1.15140  | 116.74640 | RSPO, ISCC  |
| Jabdan 2         | 1.18806  | 116.78083 | RSPO, ISCC  |
| Long Jenew 1     | 1.18730  | 116.78246 | RSPO, ISCC  |
| Long Jenew 2     | 1.12956  | 116.89581 | RSPO, ISCC  |

\* This mill may be supplied by estates via Mass Balance.

## Satellite image of the area surrounding the mill



View this mill in [Google Maps](#).

## Sustainability - deeply embedded in Neste's everyday business.

All palm oil we have used has been fully traceable to the plantation level since 2007 and 100% certified since 2013. We do not own any oil palm plantations or operate any palm oil refineries. Instead, we source palm oil from carefully selected suppliers in Malaysia and Indonesia that are committed to certification and sustainability.

[www.neste.com/sustainability](http://www.neste.com/sustainability)

**NESTE**