

Mandau Mill

Sustainability and traceability report
Reporting period January - June, 2023

Company: PT Adei Plantation ([KLK](#))
Location: Bengkalis, Riau, Indonesia
Coordinates: 1.082100, 101.333628

Mill supplies to Neste through PT Kreasijaya Adhikarya Dumai Refinery

Certified palm oil supply

A. ISCC certification*

Certification: [ISCC EU](#)

B. RSPO certification

Cert. type: IP / MB

Audit report: [October, 2022](#)

Mill production

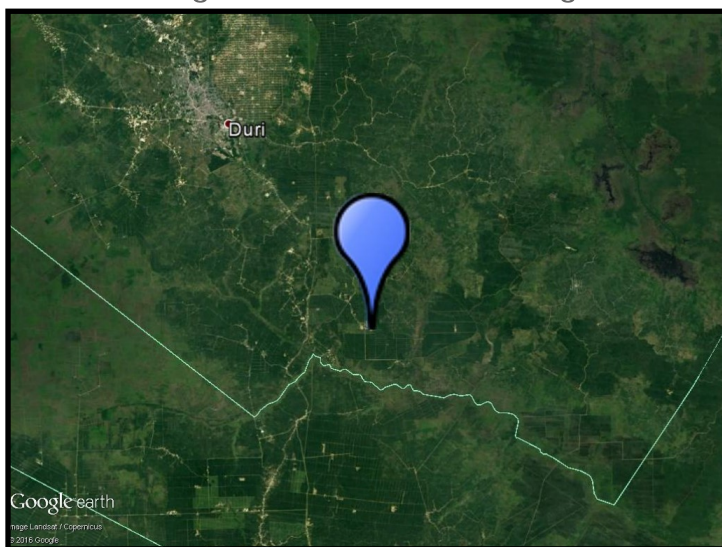
Capacity: 80 tons/hour

Cert. vol.: IP-76,168/MB-6,700 (MT)

Certified estate	Location		Certificate
Mandau Selatan	1.110350	101.310108	RSPO, ISCC
Mandau Utara	1.194050	101.296528	RSPO, ISCC

* This mill may be supplied by estates via Mass Balance. This list contains estates supplying to Neste; for a complete list please visit the supplier's [dashboard](#).

Satellite image of the area surrounding the mill



View this mill in [Google Maps](#).

Sustainability - deeply embedded in Neste's everyday business.

All palm oil we have used has been fully traceable to the plantation level since 2007 and 100% certified since 2013. We do not own any oil palm plantations or operate any palm oil refineries. Instead, we source palm oil from carefully selected suppliers in Malaysia and Indonesia that are committed to certification and sustainability.

www.neste.com/sustainability

NESTE