

Nilo 1 Mill

Sustainability and traceability report
Reporting period January - June, 2023

Company: PT Adei Plantation ([KLK](#))
Location: Pelalawan, Riau, Indonesia
Coordinates: 0.348333, 101.973056

Mill supplies to Neste through PT Kreasijaya Adhikarya Dumai Refinery

Certified palm oil supply

A. ISCC certification*

Certification: [ISCC EU](#)

Certified estate

Nilo Barat

Location

0.349167 101.976111

Certificate

RSPO, ISCC

B. RSPO certification

Cert. Type: MB

Audit Report: [August, 2022](#)

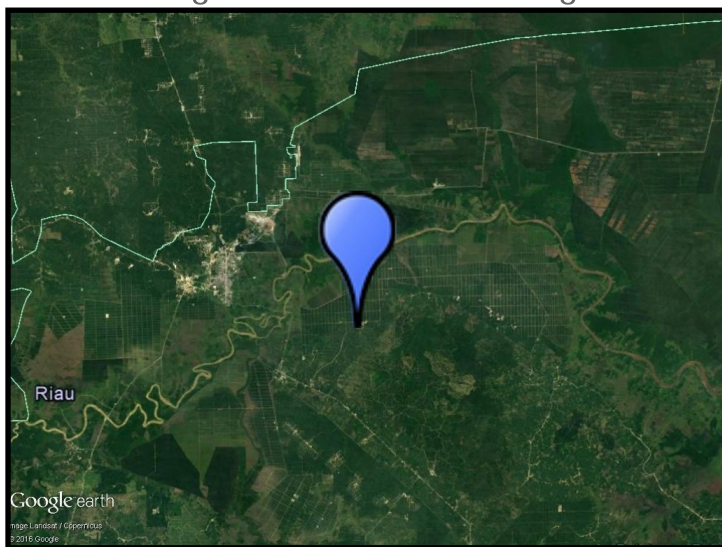
Mill production

Capacity: 120 tons/hour

Certified volume: MB-22,000 (MT)

* This mill may be supplied by estates via Mass Balance. This list contains estates supplying to Neste; for a complete list please visit the supplier's [dashboard](#).

Satellite image of the area surrounding the mill



View this mill in [Google Maps](#).

Sustainability - deeply embedded in Neste's everyday business.

All palm oil we have used has been fully traceable to the plantation level since 2007 and 100% certified since 2013. We do not own any oil palm plantations or operate any palm oil refineries. Instead, we source palm oil from carefully selected suppliers in Malaysia and Indonesia that are committed to certification and sustainability.

www.neste.com/sustainability

NESTE