

# Nilo 2 Mill

Sustainability and traceability report  
Reporting period January - June, 2023

Company: PT Adei Plantation ([KLK](#))  
Location: Pelalawan, Riau, Indonesia  
Coordinates: 0.352222, 102.095278

*Mill supplies to Neste through PT Kreasijaya Adhikarya Dumai Refinery*

## Certified palm oil supply

### A. ISCC certification\*

Certification: [ISCC EU](#)

### B. RSPO certification

Cert. type: IP / MB

Audit Report: [August, 2023](#)

### Mill production

Capacity: 70 tons/hour

Cert. vol.: IP-14,400/MB-1,600 (MT)

#### Certified estate

#### Location

#### Certificate

Nilo Timur

0.361111

102.086944

RSPO, ISCC

Nilo Barat

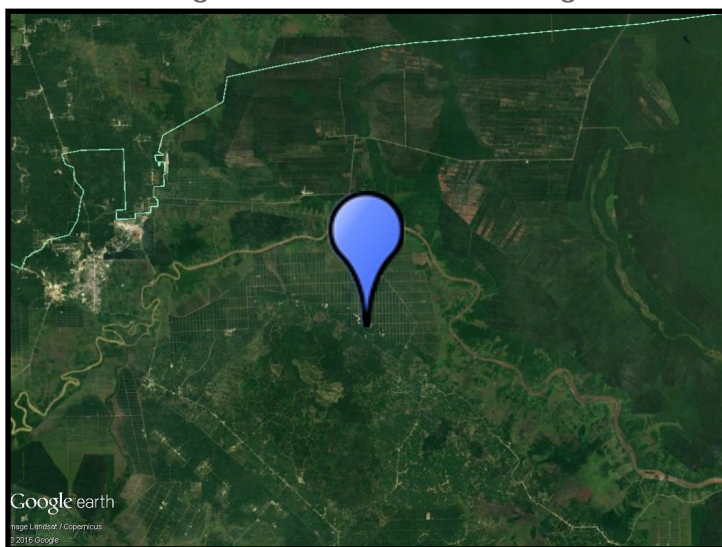
0.349167

101.976111

RSPO, ISCC

\* This mill may be supplied by estates via Mass Balance. This list contains estates supplying to Neste; for a complete list please visit the supplier's [dashboard](#).

## Satellite image of the area surrounding the mill



View this mill in [Google Maps](#).

## Sustainability - deeply embedded in Neste's everyday business.

All palm oil we have used has been fully traceable to the plantation level since 2007 and 100% certified since 2013. We do not own any oil palm plantations or operate any palm oil refineries. Instead, we source palm oil from carefully selected suppliers in Malaysia and Indonesia that are committed to certification and sustainability.

[www.neste.com/sustainability](http://www.neste.com/sustainability)

**NESTE**