

Jeram Padang Mill

Sustainability and traceability report
Reporting period July - December, 2020

Company: Kuala Lumpur Kepong Berhad (KLK)
Location: Jempol, Negeri Sembilan, MALAYSIA
Coordinates: 2.7350, 102.40830

Certified palm oil supply

A. ISCC certification*

Certification: [ISCC EU](#)

B. RSPO certification

Cert. type: Identity Preserved

Audit report: [July, 2020](#)

Mill production

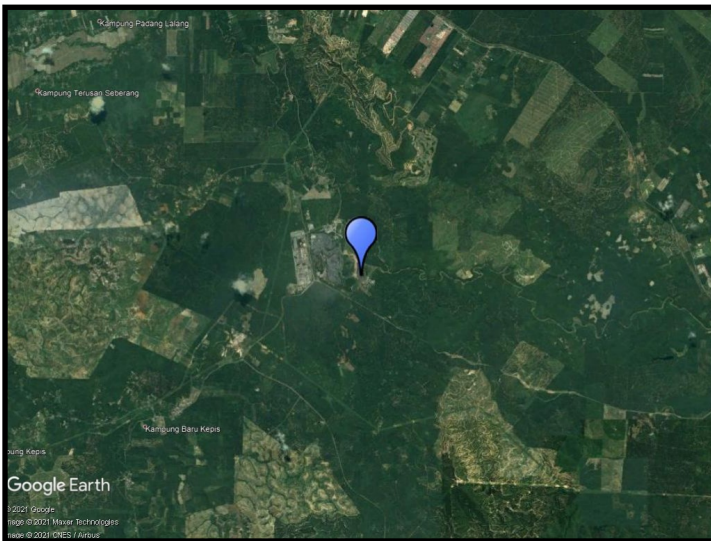
Capacity: 55 tons/hour

Certified volume: 40,301 (MT)

Certified estate	Location		Certificate
Ayer Hitam	2.93783	102.41525	RSPO, ISCC
Batang Jelai	2.70417	102.47222	RSPO, ISCC
Gunung Pertanian	3.07722	102.26972	RSPO, ISCC
Jeram Padang	2.71806	102.40389	RSPO, ISCC
Kemasul	3.29861	102.39250	RSPO, ISCC
Plus five additional estates; see RSPO report.			

* This mill may be supplied by estates via Mass Balance. This list contains estates supplying to Neste; for a complete list please visit the supplier's [dashboard](#).

Satellite image of the area surrounding the mill



View this mill in [Google Maps](#).

Sustainability - deeply embedded in Neste's everyday business.

All palm oil we have used has been fully traceable to the plantation level since 2007 and 100% certified since 2013. We do not own any oil palm plantations or operate any palm oil refineries. Instead, we source palm oil from carefully selected suppliers in Malaysia and Indonesia that are committed to certification and sustainability.

www.neste.com/sustainability

NESTE