

Semilar Mill

Sustainability and traceability report
Reporting period July - December 2020

Company: PT Tapian Nadenggan ([Golden Agri](#))
Location: Seruyan Regency, Central Kalimantan Province, INDONESIA
Coordinates: -2.24826, 112.34043

Certified palm oil supply

A. ISCC certification*

Certification: [ISCC EU](#)

B. RSPO certification

Cert. type: Identity Preserved

Audit report: [October, 2019](#)

Mill production

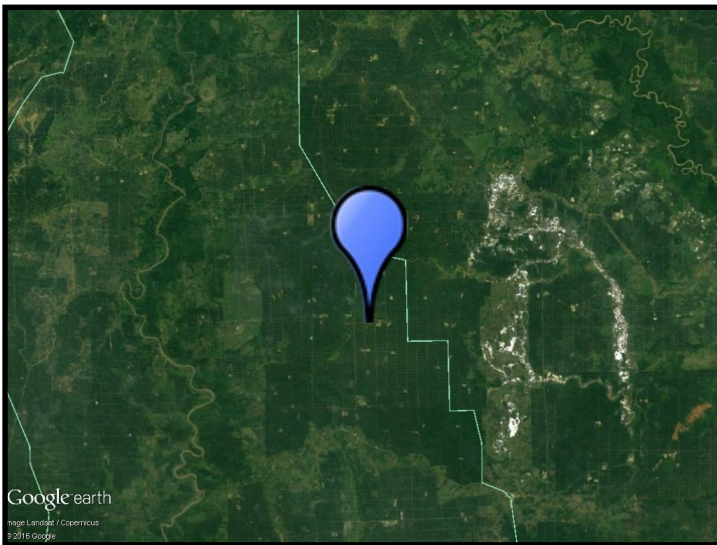
Capacity: 80 tons/hour

Certified volume: 95,979 (MT)

Certified estate	Location	Certificate
Semilar	-2.25167 112.34944	RSPO, ISCC
Sei Rindu	-2.25333 112.40778	RSPO, ISCC
Mandang	-2.27444 112.33778	RSPO, ISCC
Puri	-2.30611 112.42028	RSPO, ISCC

* This mill may be supplied by estates via Mass Balance. This list contains estates supplying to Neste; for a complete list please visit the supplier's [dashboard](#).

Satellite image of the area surrounding the mill



View this mill in [Google Maps](#).

Sustainability - deeply embedded in Neste's everyday business.

All palm oil we have used has been fully traceable to the plantation level since 2007 and 100% certified since 2013. We do not own any oil palm plantations or operate any palm oil refineries. Instead, we source palm oil from carefully selected suppliers in Malaysia and Indonesia that are committed to certification and sustainability.

www.neste.com/sustainability

NESTE