

# Tanah Datar Mill

Sustainability and traceability report  
Reporting period July - December 2020

Company: PT Inti Indosawit Subur ([Asian Agri](#))  
Location: Batu Bara Regency, North Sumatra Province, INDONESIA  
Coordinates: 3.14805, 99.55639

## Certified palm oil supply

### A. ISCC Certification\*

Certification: [ISCC EU](#)

### B. RSPO Certification

Certification Type: Mass Balance

Audit Report: [August 2018](#)

### Mill Production

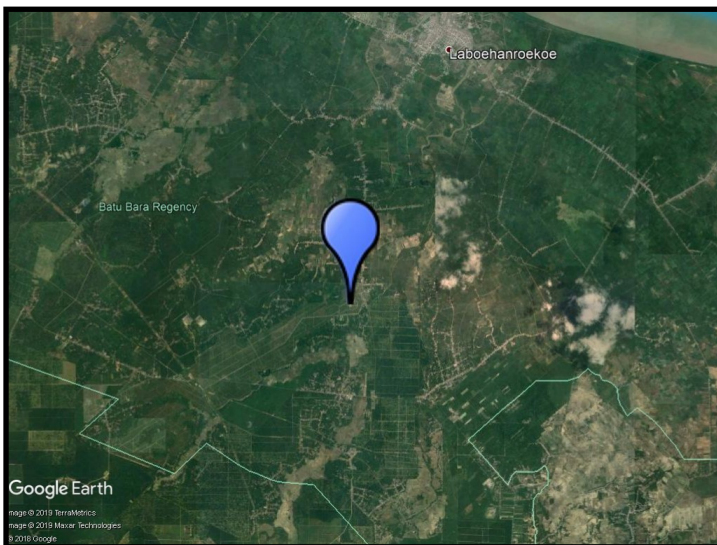
Capacity: 45 tons/hour

Certified Volume: 12,553 (MT)

Certified Estate	Location		Certificate
Tanah Datar	3.10250	99.49027	RSPO, ISCC
Bahilang	3.26055	99.15277	RSPO, ISCC

\* This mill may be supplied by estates via Mass Balance. This list contains estates supplying to Neste; for a complete list please visit the supplier's [dashboard](#).

## Satellite image of the area surrounding the mill



View this mill in [Google Maps](#).

## Sustainability - deeply embedded in Neste's everyday business.

All palm oil we have used has been fully traceable to the plantation level since 2007 and 100% certified since 2013. We do not own any oil palm plantations or operate any palm oil refineries. Instead, we source palm oil from carefully selected suppliers in Malaysia and Indonesia that are committed to certification and sustainability.

[www.neste.com/sustainability](http://www.neste.com/sustainability)

**NESTE**