

# Tanjung Keliling Mill

Sustainability and traceability report  
Reporting period July - December, 2020

Company: Kuala Lumpur Kepong Berhad (KLK)  
Location: Langkat, North Sumatra, INDONESIA  
Coordinates: 3.51124, 98.30589

## Certified palm oil supply

### A. ISCC certification\*

Certification: [ISCC EU](#)

### B. RSPO certification

Cert. type: IP / MB

Audit report: [October, 2020](#)

### Mill production

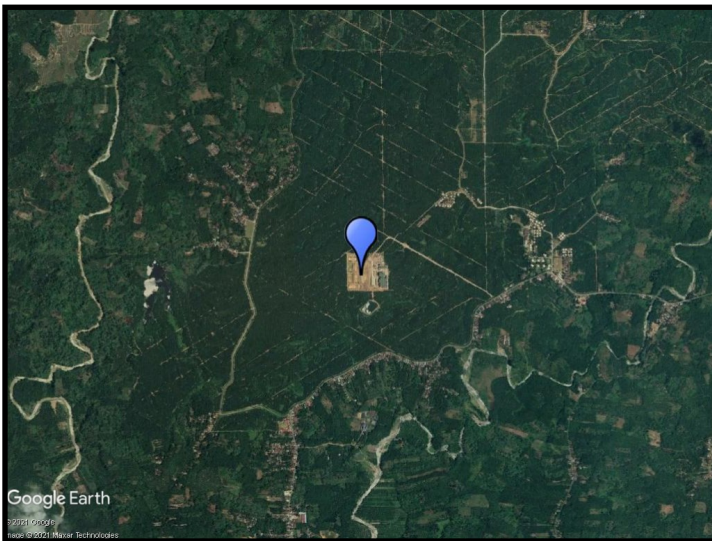
Capacity: 80 tons/hour

Certified volume: 30,225 (MT)

Certified estate	Location		Certificate
Padang Brahrang	3.58889	98.42222	RSPO, ISCC
Bekiun	3.52833	98.35083	RSPO, ISCC
Tanjung Keliling	3.51278	98.31889	RSPO, ISCC
Maryke	3.40806	98.23778	RSPO, ISCC
Gohor Lama	3.76722	98.38556	RSPO, ISCC
Plus three additional estates; see RSPO report.			

\* This mill may be supplied by estates via Mass Balance. This list contains estates supplying to Neste; for a complete list please visit the supplier's [dashboard](#).

## Satellite image of the area surrounding the mill



View this mill in [Google Maps](#).

## Sustainability - deeply embedded in Neste's everyday business.

All palm oil we have used has been fully traceable to the plantation level since 2007 and 100% certified since 2013. We do not own any oil palm plantations or operate any palm oil refineries. Instead, we source palm oil from carefully selected suppliers in Malaysia and Indonesia that are committed to certification and sustainability.

[www.neste.com/sustainability](http://www.neste.com/sustainability)

**NESTE**